



Neeld Place, London, W9 2BF
£6,500





3 x  3 x  1 x 

****Short let up available for up to 5 Months**

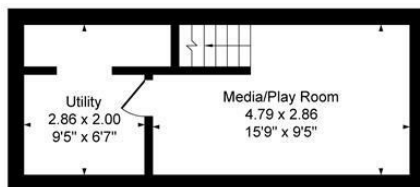
Braithwait is delighted to offer this newly built contemporary mews house set very privately within a verdant, gated courtyard. The 3 bed house comprises its own parking space and private terrace. The property is arranged on three floors plus a basement, with a terrace area off the master suite. Principal bedroom with en-suite bathroom, second bedroom with en-suite shower room, further bedroom with family bathroom, open plan reception/kitchen/dining room, study/TV room, guest cloakroom and utility room.

This newly created private courtyard mews is located in the triangle of Elgin Avenue, Sutherland Avenue and Harrow Road. By walking, cycling or motoring it is a short distance to Little Venice (0.7 mile), Portobello Road Market(1 mile), Paddington and the Heathrow Express (1.4 miles), Regents Park, Hyde Park and Marble Arch (2 miles) and Harrods (2.6 miles)

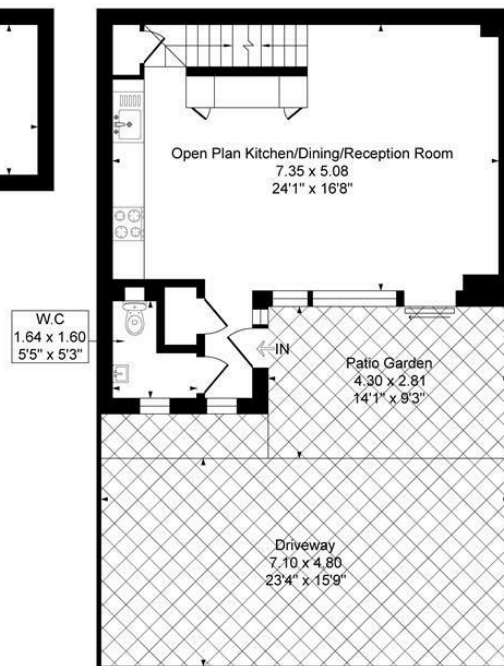


Neeld Place, Maida Vale, W9

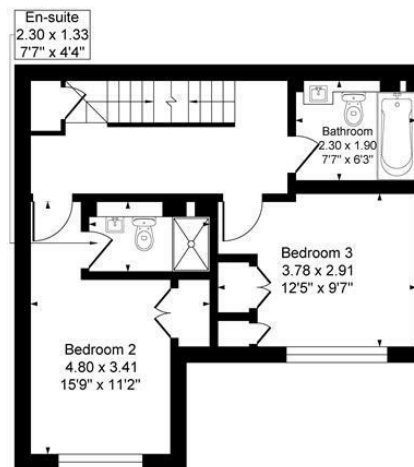
Approximate Gross Internal Floor Area = 137.0 sq m / 1475 sq ft



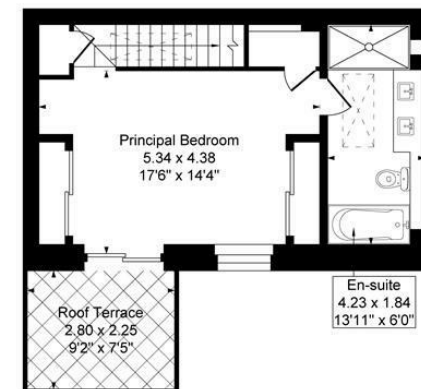
Lower Ground Floor



Ground Floor



First Floor



Second Floor

Illustration for identification purposes only, measurements are approximate, not to scale.

Important Notice Debussy Property Service Ltd trading as Braithwait for themselves and for the vendor of this property whose agents they are, give notice that (i) these particulars do not constitute any part of an offer or contract, (ii) all statements contained within these particulars are made without responsibility on the part of Braithwait or the vendor, (iii) whilst none in good faith, none of the statements contained within these particulars are to be relied upon as a statement of representation or fact, (iv) any intending purchaser must satisfy him/herself by inspection or otherwise as to the correctness of each of the statements contained within these particulars, (v) the vendor does not make or give either Braithwait or any person within their employment any authority to make or give any representation or warranty whatsoever in relation to this property. Wide angled lenses may be used in photographs.

Call us on 0207 289 8889 or email sales@braithwait.co.uk

